

# **DL Series 24-pin Dot Matrix Printers**



## Fujitsu DL7600Pro 24-Pin Dot Matrix Printer

The heavy duty DL7600Pro, Fujitsu's flagship serial dot matrix printer, can print up to 9 part paper in high impact mode. Its long-life ribbon cartridge is rated for 18 million characters, making it ideal for print intensive environments.

- ▶ Reliable high-speed printing - Up to 800 cps
- ▶ Flat print structure with a variety of paper paths
- ▶ 24-pin printhead for high-quality output
- ▶ High 1+8 multi-copy capability
- ▶ Auto-forms thickness adjust

### PAPER PATH OPTIONS

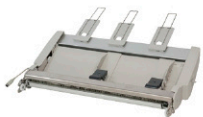
Various paper path options.



Tractor (Common to Rear & Front)



Large Stacker



Cut Sheet Feeder



Small Paper Table



Acoustic Cover



Cut Sheet Feeder / Large Stacker (Optional)

### 8 PAPER PATHS



Continuous Paper with Tractor



A sheet of paper with Cut Sheet Table and Rear Stacker



A stack of sheets with Cut Sheet Feeder and Rear Stacker (Cut Sheet Table necessary)

### RIBBON

DL7600Pro Ribbon unit





## SPECIFICATIONS

Model Name		Fujitsu DL7600Pro
Printing Technology		Bi-directional with logical seeking
Print Head		24-pin, Impact Dot Matrix
Speed	Super High Draft Quality	800cps (10cpi)
	High Draft Quality	720cps (10cpi),864cps (12cpi)
	Draft Quality	540cps (10cpi),648cps (12cpi)
	Report Quality	360cps (10cpi),432cps (12cpi)
	Letter Quality	180cps (10cpi),216cps (12cpi)
Resolution		360 x 360 dpi
Copy Ability		Original + 7 carbonless copies
	At High Impact Mode	Original + 8 carbonless copies
Interface	Parallel	IEEE1284 Nibble Mode
	USB	USB Ver.2.0 (TYPE B)
	Serial	RS232C 25-pin
	LAN (Optional card needed)	10/100 BaseT, TCP/IP Protocol
Emulation		Fujitsu DPL24C PLUS, Epson ESC/P2, IBM XL24E
Printer Driver		Microsoft Windows Drivers Available
Input Buffer		Max. 128KB
Dimension (WxDxH)		600 x 350 x 290mm (23.62 x 13.78 x 11.42inch)
Weight		Approximately 22Kg (48lbs)
Noise		59dBA / 55dBA (Sound with Acoustic Cover)
Reliability	MTBF	20,000H (25%duty cycle)
	MTTR	0.5H
	Printer Life	7.5 million Line-Feed or 5 years
Print Head	Print Head Life	500 million strokes (each pin)
		240 million strokes (each Pin) at high impact mode
Ink Ribbon	Ribbon Life (Black)	18 million characters (ANK Draft Quality)
Model		Parallel + USB Model (LAN Upgradeable)
		Parallel + RS232C Model



# Fujitsu DL7400Pro 24 Dot-Matrix Printer

The Fujitsu DL7400Pro is a reliable, multi-purpose printer that supports many different paper paths for accommodating most any application.

- ▶ Reliable high-speed printing - Up to 600 cps
- ▶ Flat print structure with a variety of paper paths
- ▶ Auto-forms thickness adjust
- ▶ High 1+7 multi-copy capability



## PAPER PATH OPTIONS

Various paper path options.



Tractor (Common to Rear & Front)



Large Stacker



Cut Sheet Feeder



Small Paper Table



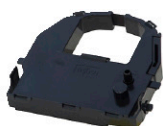
Acoustic Cover

## SPECIFICATIONS

Model Name		Fujitsu DL7400Pro
Printing Technology		Bi-directional with logical seeking
Print Head		24-pin, Impact Dot Matrix
Speed	Super High Draft Quality	600cps (10cpi)
	High Draft Quality	505cps (10cpi), 606cps (12cpi)
	Draft Quality	360cps (10cpi), 432cps (12cpi)
	Report Quality	240cps (10cpi), 288cps (12cpi)
	Letter Quality	120cps (10cpi), 144cps (12cpi)
Resolution		360 x 360 dpi
Copy Ability		Original + 4 carbonless copies
	At High Impact Mode	Original + 7 carbonless copies
Interface	Parallel	IEEE1284 Nibble Mode
	USB	USB Ver.2.0 (TYPE B)
	Serial	RS232C 25pin
	LAN(Optional card needed)	10BASE-T, 100 Base-TX, TCP/IP Protocol
Emulation		Fujitsu DPL24C PLUS, Epson ESC/P2, IBM XL24E
Printer Driver		Microsoft Windows Drivers Available
Input Buffer		Max. 128KB
Dimension (WxDxH)		600 x 350 x 290mm (23.62 x 13.78 x 11.42inch)
Weight		Approximately 18.5Kg (40.8lbs)
Noise		59 dBA / 55dBA (Sound With Acoustic Cover)
Reliability	MTBF	20,000H (25% duty cycle)
	MTTR	0.5H
	Printer Life	5 million Line-Feed or 5 years
Print Head	Print Head Life	400 million strokes (each pin)
		240 million strokes (each pin) at high impact mode
Ink Ribbon	Ribbon Life (Black)	5 million characters (ANK Draft Quality)
Model		Parallel + USB Model (LAN Upgradeable)
		Parallel + RS232C Model

## RIBBON

DL7400Pro Ribbon unit





## Fujitsu DL3850+ 24-Pin Dot Matrix Printer

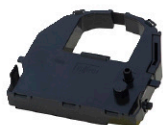
High Quality. Silent Printing. Low Profile.

- ▶ Compact, low profile 136 column design
- ▶ Ultra-low noise emissions - 49dBA
- ▶ 24-pin printhead for high-quality output
- ▶ Multiple Interface Options



### RIBBON

DL3850+ Ribbon Unit



### SPECIFICATIONS

Model Name		Fujitsu DL3850+
Printing Technology		Bi-directional with logical seeking
Print Head		24-pin, Impact Dot Matrix
Printing columns (10cpi)		136 column
Speed	Letter Quality	113cps (10cpi), 135cps (12cpi)
	Report Quality	225cps (10cpi), 270cps (12cpi)
	Draft Quality	360cps (10cpi), 432cps (12cpi)
	High Draft Quality	448cps (10cpi), 537cps (12cpi)
Resolution		360x360dpi (Maximum Graphics Resolution, Under ESC/P Emulation only)
Copy Ability		Original+4 copies
Interface	Parallel	IEEE1284 Nibble Mode
	USB	USB Ver.1.1 TYPE B
	Serial	RS232C (25-pin)
	LAN(Optional cardneeded)	10/100BaseT, TCP/IP Protocol
Emulation		Fujitsu DPL24C PLUS, Epson ESC/P2, IBM iXL24E
Input Buffer		Max. 128KB
Dimension (WxDxH)		570 x 330 x 120mm (22.4x13.0x4.72inch)
Weight		Approximately 9.7Kg (19lbs)
Noise		49dBA
Reliability	MTBF	20,000H (25% duty cycle)
	MTTR	0.3H
	Printer Life	5 million Line-Feed or 5 years
Option		RS232C I/F Board
		LAN Card
Print Head	Print Head Life	400 million strokes (each pin)
Ink Ribbon	Ribbon Life (Black)	5 million characters
Model		Parallel + USB Model (LAN Upgradeable)
		Parallel + USB + Arabic Characters Model (LAN Upgradeable)
		Parallel + RS232C Model





## Fujitsu DL3750+ 24-Pin Dot Matrix Printer

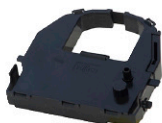
High Quality. Silent Printing. Low Profile.

- ▶ Compact, low profile, 80 column design
- ▶ Ultra-low noise emissions - 49dBA
- ▶ 24-pin printhead for high-quality output
- ▶ Multiple Interface Options



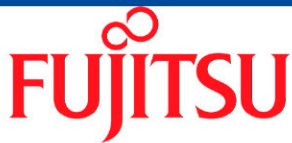
### RIBBON

The same ribbon is used for the 3750+, 3850+ and 7400 Pro



### SPECIFICATIONS

Model Name		Fujitsu DL3750+
Printing Technology		Bi-directional with logical seeking
Print Head		24 Pin, Impact Dot Matrix
Printing columns (10cpi)		80 column
Speed	Letter Quality	113cps (10cpi), 135cps (12cpi)
	Report Quality	225cps (10cpi), 270cps (12cpi)
	Draft Quality	360cps (10cpi), 432cps (12cpi)
	HighDraft Quality	400cps (10cpi), 480cps (12cpi)
Resolution		360x360 dpi (Maximum Graphics Resolution, Under ESC/P Emulation only)
Copy Ability		Original + 4 copies
Interface	Parallel	IEEE1284 Nibble Mode
	USB	USB Ver.1.1 TYPE B
	Serial	RS232C (25pin)
	LAN (Optional card needed)	10/100BaseT, TCP/IP Protocol
Emulation		Fujitsu DPL24C PLUS, Epson ESC/P2, IBM tXL24E,
Input Buffer		Max. 128KB
Dimension (WxDxH)		415x330x120mm (16.3x13.0x4.72inch)
Weight		Approximately 7.3Kg (16lbs)
Noise		49dBA
Reliability	MTBF	20,000H (25% duty cycle)
	MTTR	0.3H
	Printer Life	5 million Line-Feed or 5 years
Print Head	Print Head Life	400 million strokes (each Pin)
Ink Ribbon	Ribbon Life (Black)	5 million characters
Model		Parallel + USB Model (LAN Upgradeable)
		Parallel + USB + Arabic characters Model (LAN Upgradeable)
		Parallel + RS232C Model



## Fujitsu DL3100 24-Pin Dot Matrix Printer

Highly compact and reliable 24-pin 80-column printer.

- ▶ 24-pin printhead for high-quality output
- ▶ Incredibly reliable
- ▶ Ultra-low energy consumption
- ▶ 7 Million Character Ribbon
- ▶ Multiple connectivity options through different printer models



### RIBBON

DL3100 Ribbon unit



### ROLL PAPER UNIT



- ▶ Roll paper holder can be attached to the left and right grooves (slots) from which the rear cover has been removed simply by inserting them from above
- ▶ A simple structure that does not require a screwdriver for installation and only requires the use of four thumbscrews.
- ▶ Maximum outer diameter: 120 mm
- ▶ Paper width: 4", 8.3", 8.5"
- ▶ Dimension with paper holder: 387mm(W) x 351mm(D) x 227mm(H)
- ▶ Ordering part number: KA02100-D700

### SPECIFICATIONS

Model Name		Fujitsu DL3100
Printing Technology		Bi-directional with logical seeking
Print Head		24-pin, Impact Dot Matrix
Printing columns (10cpi)		80 column
Speed	High Draft Quality	450cps (10cpi)
	Draft Quality	300cps (10cpi)
	Letter Quality	120cps (10cpi)
Resolution		360x360dpi (Maximum Graphics Resolution, Under ESC/P Emulation only)
Copy Ability		Original + 5 copies
Interface	USB	USB Ver.2.0 (TYPE B)
	Parallel	IEEE1284 Nibble Mode
	Serial	RS232C 25pin
	LAN	10/100BaseT, TCP/IP Protocol
Emulation		Fujitsu DPL24C PLUS, Epson ESC/P2, IBM 2390
Dimension (WxDxH)		369 x 283 x 146mm
Weight		Approx. 5.5Kg
Noise		Approx. 57dBA / 54dBA (Low noise mode)
Reliability	MTBF	20,000H (25%duty cycle)
	MTTR	0.34H
	Printer Life	5 million Line-Feed or 5 years
Print Head	Print Head Life	400 million strokes (each pin)
Ink Ribbon	Ribbon Life (Black)	7 million characters (ANSI Draft Quality)
Model		USB + Parallel
		USB + Serial
		USB + LAN

# Fujitsu DL Series Reference Table

DL SERIES	PART NUMBER	MAX PRINT SPEED (10 CPI)	COLUMN	USB	PARALLEL	RS-232C	LAN	PRINTHEAD	RIBBON CARTRIDGE
DL3100	KA02100-B511	450 CPS	80	•	•			KA02100-0828	KA02100-0201
	KA02100-B611	450 CPS	80	•		•		KA02100-0828	KA02100-0201
	KA02100-B711	450 CPS	80	•			•	KA02100-0828	KA02100-0201
DL3750+	KA02013-B511	400 CPS	80	•	•		Optional: KA02012-C103	CA02281-E718	KA02086-C802
	KA02013-B611	400 CPS	80		•	•		CA02281-E718	KA02086-C802
	KA02013-B515 Arabic Characters Model	400 CPS	80	•	•		Optional: KA02012-C103	CA02281-E718	KA02086-C802
DL3850+	KA02014-B511	448 CPS	136	•	•		Optional: KA02012-C103	CA02281-E718	KA02086-C802
	KA02014-B611	448 CPS	136		•	•		CA02281-E718	KA02086-C802
	KA02014-B515 Arabic Characters Model	448 CPS	136	•	•		Optional: KA02012-C103	CA02281-E718	KA02086-C802
DL7400 Pro	KA02086-B510	600 CPS	136	•	•		Optional: KA02086-C130	KA02033-E660	KA02086-C802
	KA02086-B610	600 CPS	136		•	•		KA02033-E660	KA02086-C802
DL7600 Pro	KA02087-B510	800 CPS	136	•	•		Optional: KA02086-C130	KA02046-E426	KA02087-D811
	KA02087-B610	800 CPS	136		•	•		KA02046-E426	KA02087-D811